

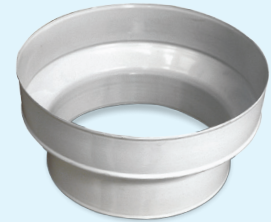
Duct Accessories



Duct Reducers

ThermoFlo's Duct Reducers easily reduce or increase duct diameter to suit requirements. Made with heavy duty galvanized steel, powder coated white.

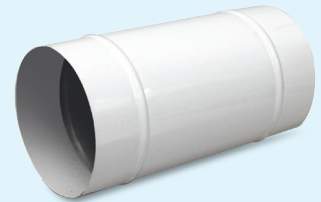
Size	6"-4"	8"-6"	10"-8"	12"-10"
------	-------	-------	--------	---------



Duct Couplers

ThermoFlo's Duct Couplers connect two segments of flexible duct together where added stability and sealing capability is required, such as passing ventilation through a wall. Made with heavy duty galvanized steel and powder coated white.

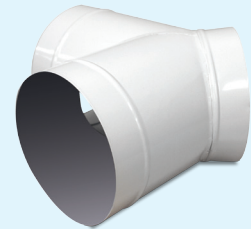
Size	4"	6"	8"	10"	12"
------	----	----	----	-----	-----



Duct Y Connectors

ThermoFlo's Y Connectors allow multiple ventilation areas to be accessed by a single inline fan source. The "Y" shape makes it useful in areas with tight access angles. Made with heavy duty galvanized steel and powder coated white, the "Pants" shape provides equal air distribution.

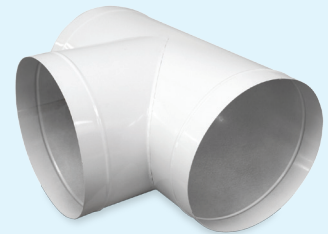
Size	4" x 4" x 4"	6" x 6" x 6"	8" x 8" x 8"	10" x 10" x 10"	12" x 12" x 12"
------	--------------	--------------	--------------	-----------------	-----------------



Duct T Connectors

ThermoFlo's T Connectors allow multiple ventilation areas to be accessed by a single inline fan source or for several fans to join a single exhaust. The "T" shape makes it ideal for right angle joins in large spaces. Made with heavy duty galvanized steel and powder coated white.

Size	4" x 4" x 4"	6" x 6" x 6"	8" x 8" x 8"	10" x 10" x 10"	12" x 12" x 12"
------	--------------	--------------	--------------	-----------------	-----------------



Duct Clamps

Stainless steel Duct Clamps are perfect for attaching ducting. They are simple to use and make for a clean and attractive duct connection.

Size	4"	6"	8"	10"	12"
------	----	----	----	-----	-----



Proud to be associated with



Canadian
Manufacturers &
Exporters
British Columbia Division



We are local - give us a call today!

1.866.321.1020
www.thermoflotech.com